



**CIRCLE
S
PRODUCTS, INC.**

TECHNICAL BULLETIN

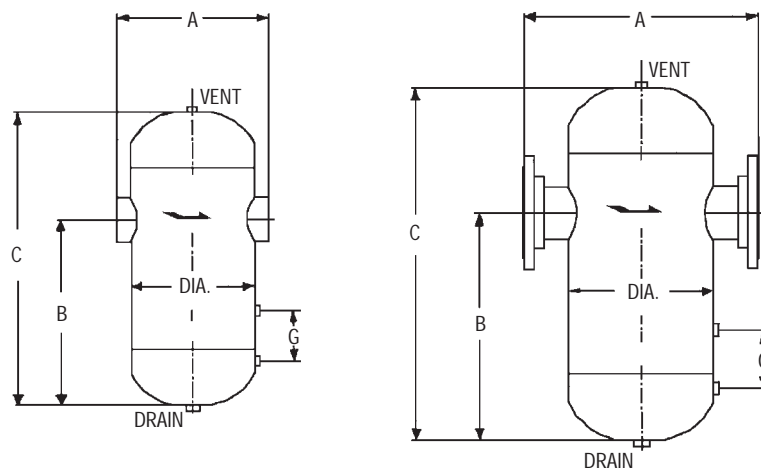
TYPE: Horizontal flow installations only
MODEL: Dry-Flo™ T Moisture Separator
 TB No. S3800

Date 1-99

Gas, laden with moisture, enters the inlet of the separator where a deflector plate directs the flow in a downward centrifugal motion. The entrained moisture is then separated out of the flow by a reduction in velocity. The separated liquid is sent to the outer walls of the separator and falls below the re-entrainment breaker plate where it is prevented for re-entering the flow stream. A dry, clean flow then results, exiting upward through the outlet of the separator.

With correct sizing and proper drainage, these separators are designed to eliminate 99% of all entrained liquids and particles that are 10 microns and larger in size.

The Model "T" Separators can be fabricated from carbon steel or stainless steel and are manufactured in accordance with the ASME Code Section VIII, Division I.



DIMENSIONS AND WEIGHTS

PIPE SIZE	THREADED OR SOCKET WELD A	150# & 300# FLANGED A	B	C	DIA.	G	NPT DRAIN	THREADED OR SOCKET WELD	150# FLANGED	300# FLANGED
								DESIGN CUSTOMER SPECIFICATIONS WEIGHT	DESIGN 150 PSIG @ 450° F WEIGHT	DESIGN 500 PSIG @ 650° F WEIGHT
1"	6 3/8"	10 1/2"	10 1/2"	16"	5 9/16"		1"	29	33	35
1 1/4"	6 3/8"	10 1/2"	10 1/2"	16"	5 9/16"		1"	30	35	37
1 1/2"	7 5/8"	11 1/2"	12 1/2"	19"	6 5/8"		1"	55	50	56
2"	7 7/8"	11 1/2"	12 1/2"	19"	6 5/8"		1"	57	55	59
2 1/2"	-	16"	15"	22"	8 5/8"		1"	-	100	110
3"	-	18"	18"	26"	10 3/4"	5 3/4"	1"	-	140	150
4"	-	20"	22"	31"	12 3/4"	5 3/4"	1 1/2"	-	195	220
5"	-	22"	26"	36"	14"	7 7/8"	1 1/2"	-	230	290
6"	-	24"	30"	41"	16"	7 7/8"	1 1/2"	-	350	380
8"	-	28"	37"	50"	18"	7 7/8"	2"	-	475	610
10"	-	34"	55"	70"	24"	7 7/8"	2"	-	780	1180
12"	-	38"	58"	75"	28"	7 7/8"	2 1/2"	-	940	1510
14"	-	42"	60"	79"	32"	7 7/8"	2 1/2"	-	1155	2205
16"	-	47"	68"	89"	36"	7 7/8"	3"	-	1605	2785
18"	-	54"	85"	109"	42"	9 1/8"	3"	-	2260	4370
20"	-	62"	99"	126"	48"	9 1/8"	3"	-	2845	5635
22"	-	64"	102"	130"	48"	10 1/4"	3"	-	3000	6085
24"	-	70"	109"	140"	54"	10 1/4"	4" *	-	4295	7845

* Flanged Drain