



CIRCLE

PRODUCTS, INC.

TECHNICAL BULLETIN

TYPE: Horizontal or Vertical downflow installations

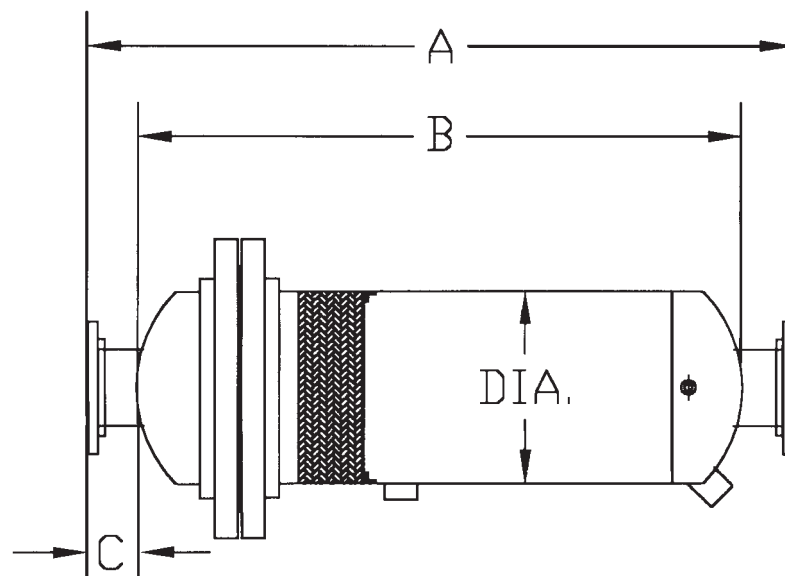
MODEL: Dry-Flo™ L1C Coalescer
 TB No. S3175

Date 1-99

The Model "L1C" Coalescer-Separators are designed for horizontal or vertical down flow installations. These separators use a two stage separation process. Stage one utilizes a wire mesh pad that increases the size of the droplets as they travel through the pad. In stage two the stainless steel Separating Tuyere Diffuser causes the stream to enter a controlled centrifugal flow. Due to the centrifugal motion, entrained liquids and solids are directed to the outer walls of the separator. Re-entrainment breaker plates create a quiet inert zone to prevent liquid from re-entering the flow stream once separation has taken place.

With correct sizing and proper drainage, these separators are designed to eliminate 99% of all entrained liquids and particles that are 5 microns and larger in size.

The Model "L1C" Coalescer-Separators can be fabricated from carbon steel or stainless steel and are manufactured in accordance with ASME Code Section VIII Division I. As a standard, these separators come with the ASME Code Stamp.



DESIGN PRESSURE 150 PSI @ 450° F / DIMENSIONS AND WEIGHTS						
PIPE SIZE	A	B	C	DIA.	NPT DRAIN	WEIGHT
					STD	
2 1/2"	34"	28"	3"	6 5/8"	1"	125
3"	36"	30"	3"	8 5/8"	1"	180
4"	42"	34"	4"	10 3/4"	1 1/2"	280
5"	46"	38"	4"	12 3/4"	1 1/2"	390
6"	48"	40"	4"	14"	1 1/2"	510
8"	58"	48"	5"	16"	2"	665
10"	64"	54"	5"	20"	2"	1060
12"	72"	62"	5"	24"	2 1/2"	1415
14"	78"	68"	5"	28"	2 1/2"	1830
16"	86"	76"	5"	30"	3"	2130

DIMENSIONS CAN BE SLIGHTLY DIFFERENT AT HIGHER PRESSURES AND TEMPERATURES AND ARE AVAILABLE UPON REQUEST.